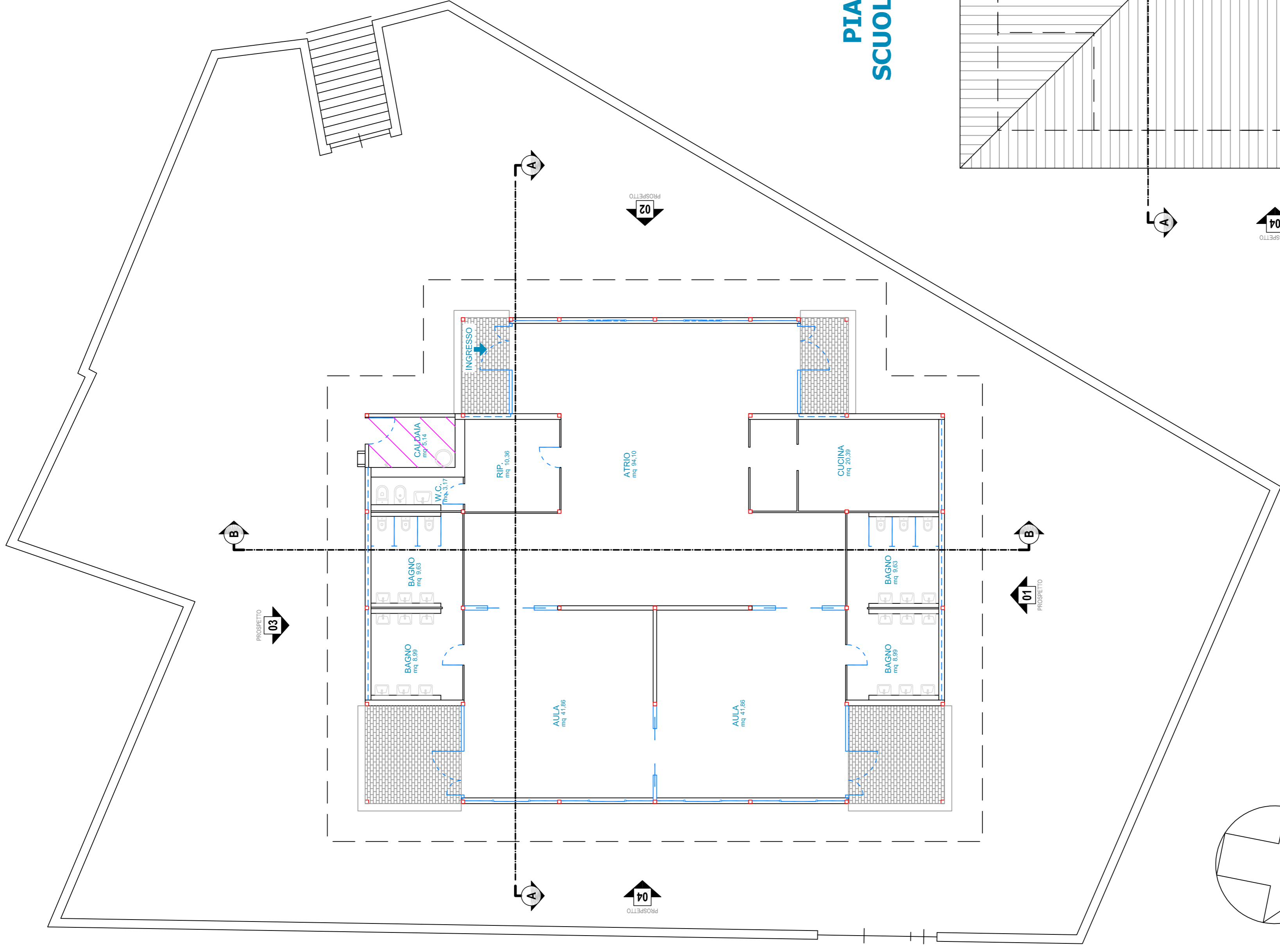
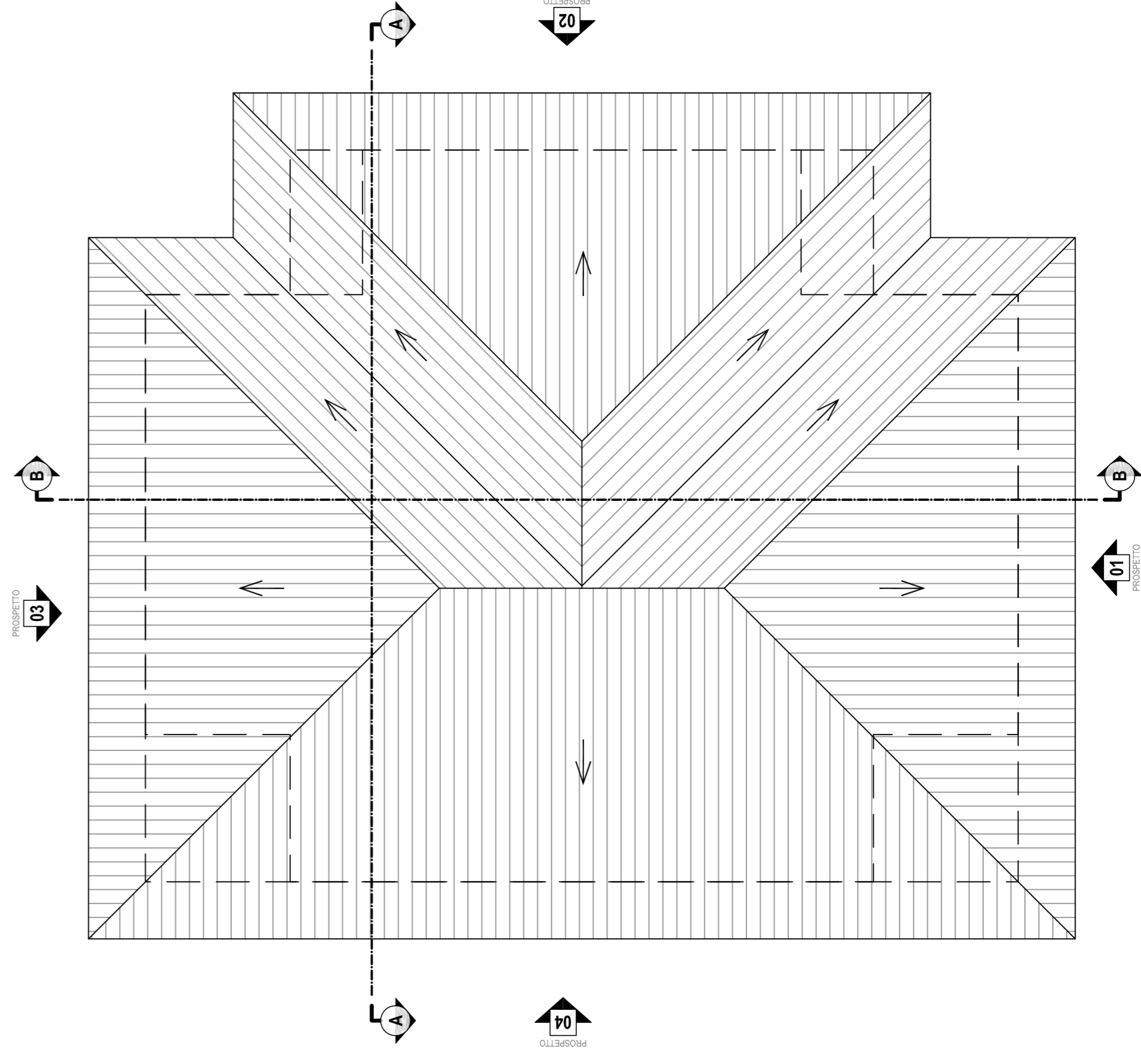


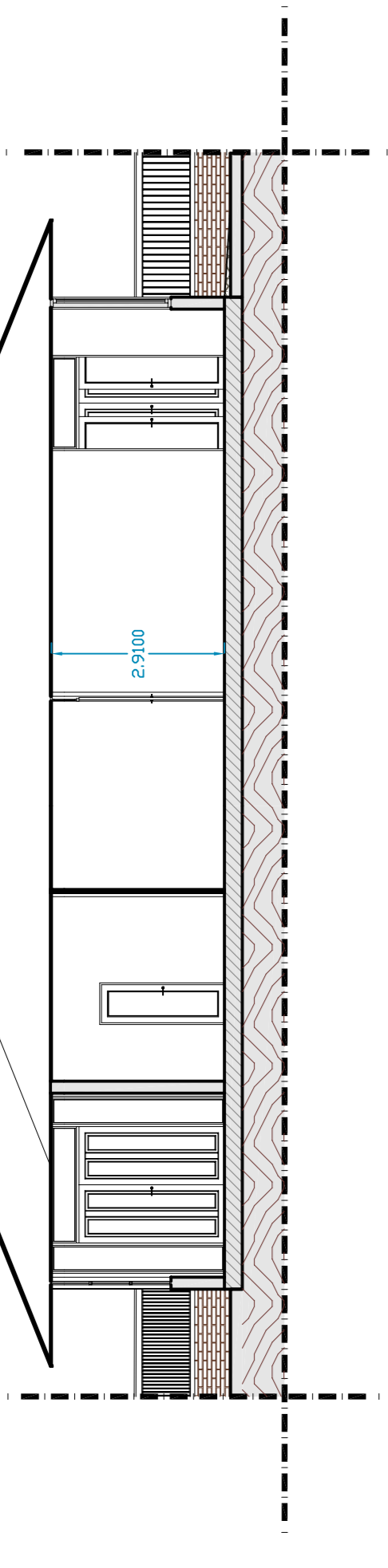
**PIANTA PIANO TERRA H = 2,93 m
SCUOLA MATERNA CHIEVE**



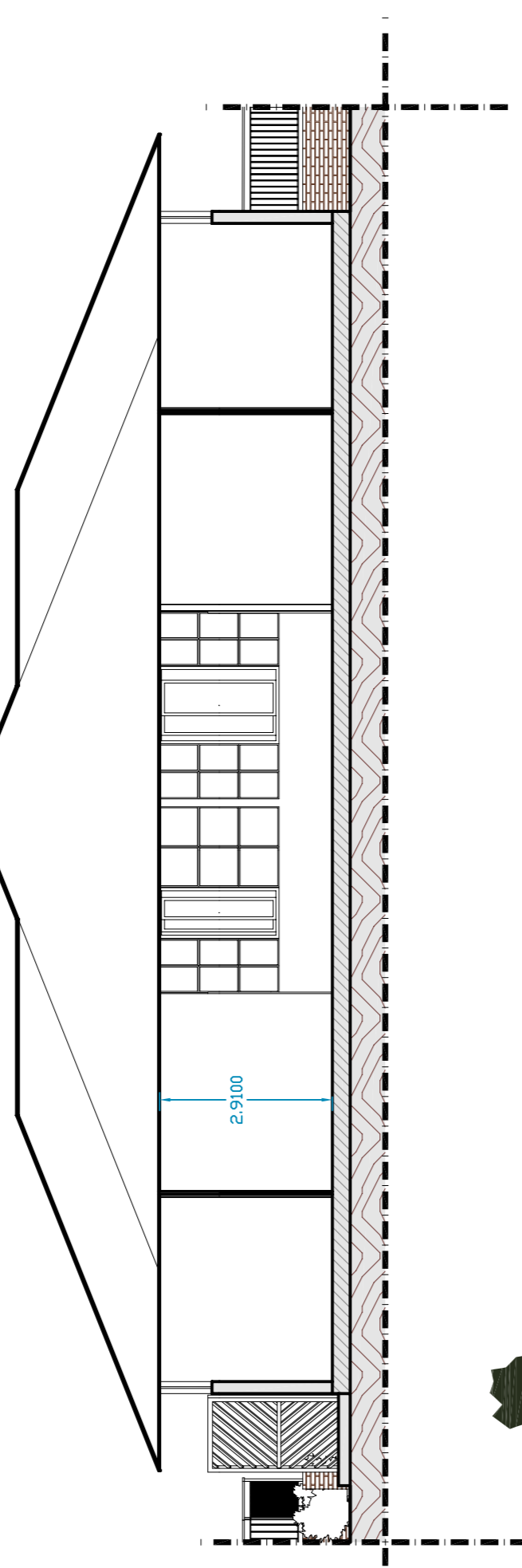
**PIANTA COPERTURA
SCUOLA MATERNA CHIEVE**



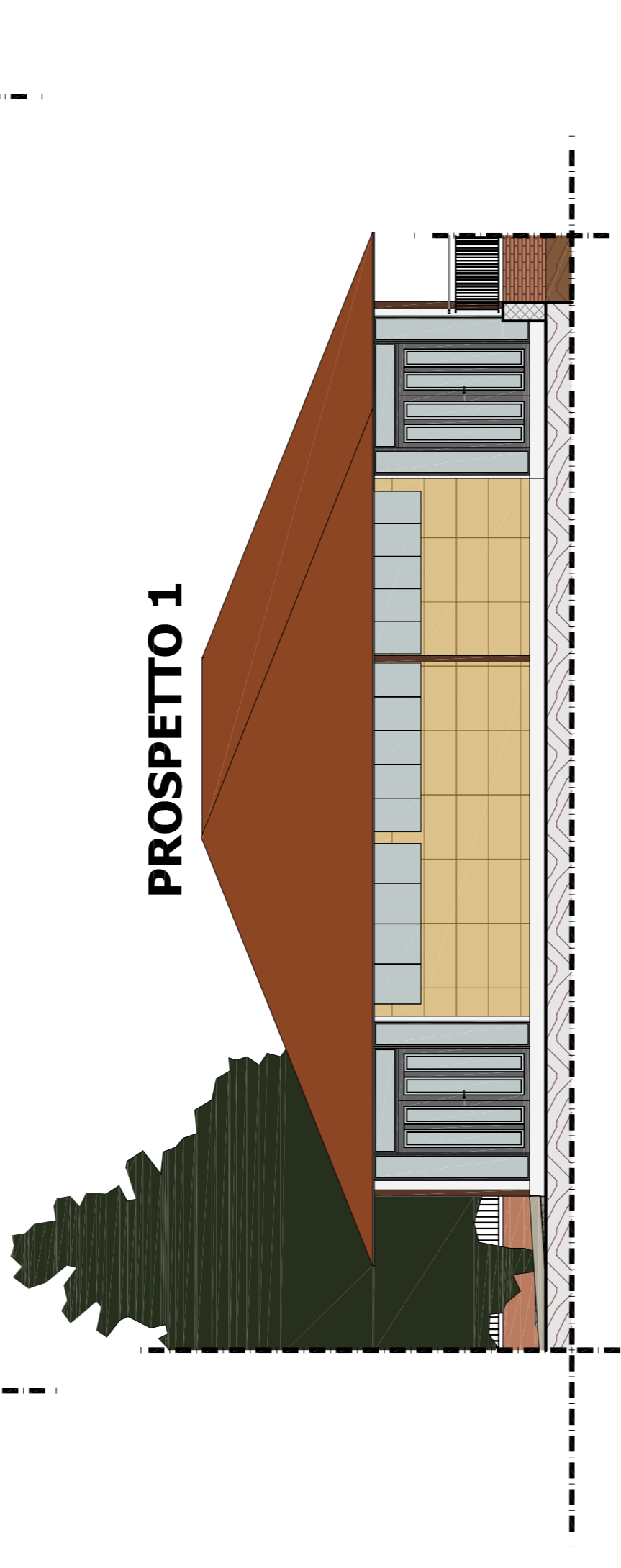
SEZIONE A-A



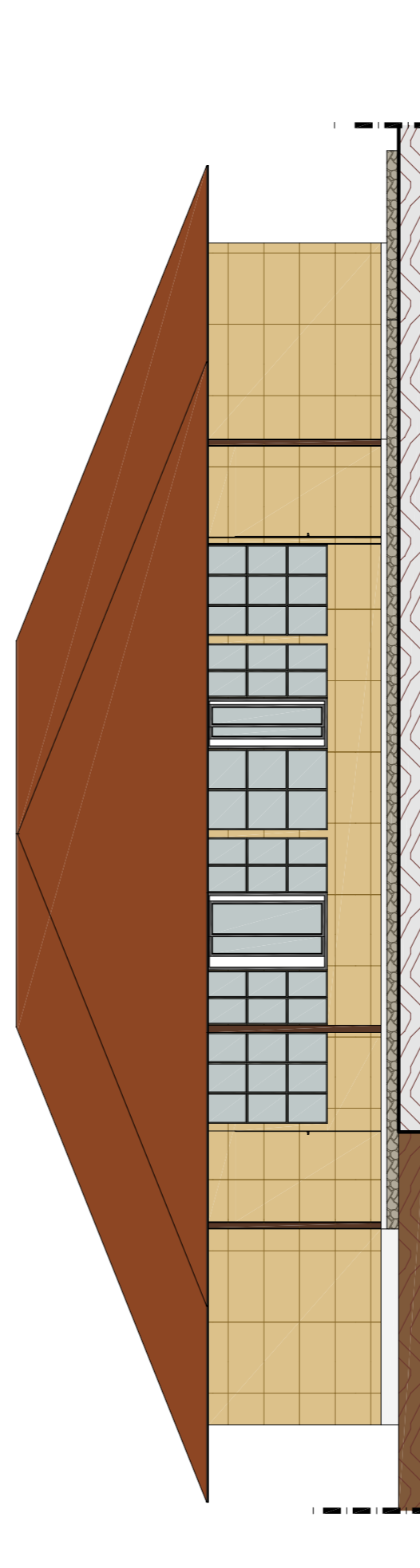
SEZIONE B-B



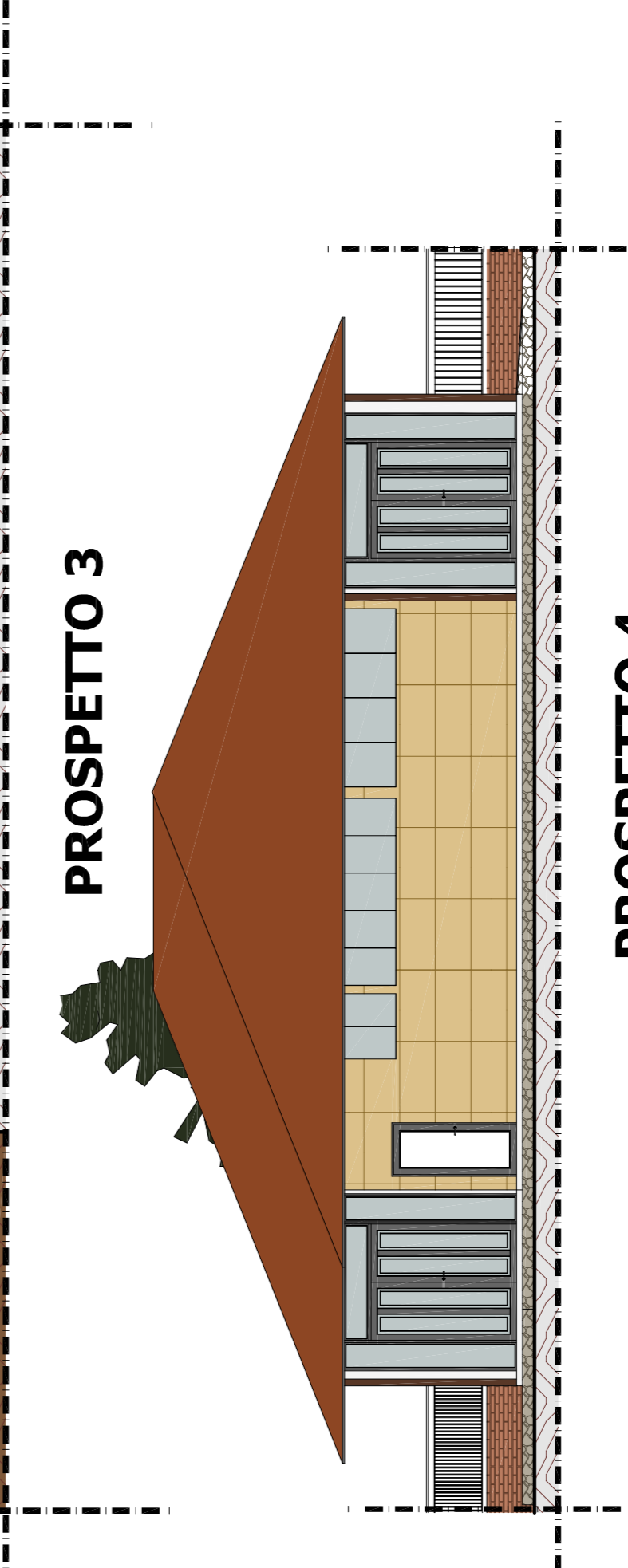
PROSPETTO 1



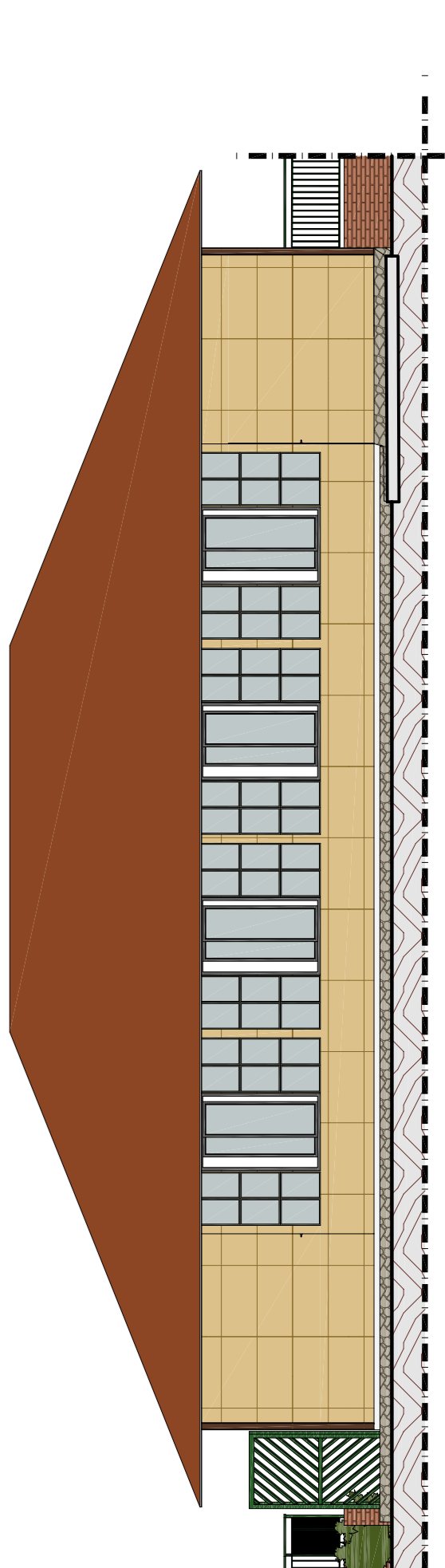
PROSPETTO 2



PROSPETTO 3



PROSPETTO 4



COMUNE
GIFFONI VALLE PIANA (SALERNO)

OGGETTO
DECRETO INTERMINISTERIALE 14 APRILE 2015. ATTUAZIONE PROTOCOLLO KYOTO.
INTERVENTI DI EFFICIENTAMENTO ENERGETICO SCUOLA MATERNA FRAZIONE CHIEVE.

COMMITTENTE
AMM.NE COMUNALE
GIFFONI VALLE PIANA

PROGETTISTA
Arch. Gisella CARUCCI (UTC)

DATA
Maggio 2017

ARCHIVIO

DESCRIZIONE ELABORATO

PROGETTO
DEFINITIVO ED ESECUTIVO
STRALCIO

TAVOLA
05

SCALA

05 - PIANTE, PROSPETTI E SEZIONE A-A STATO DI FATTO

IL PROGETTISTA