



provinciasalerno

**Lavori urgenti di messa in sicurezza, ripristino e consolidamento a seguito di dissesti e movimenti franosi sulla SP 48a tra Pollica e Pioppi
- Interventi urgenti di Protezione Civile -**

PROGETTO ESECUTIVO

Rif. U.P. :

S.3

STRUTTURE - PARTICOLARI COSTRUTTIVI

PARATIA - TIPOLOGIA N. 1

PARATIA - TIPOLOGIA N. 2

Scala:

File origine:

File archivio:

PROGETTAZIONE

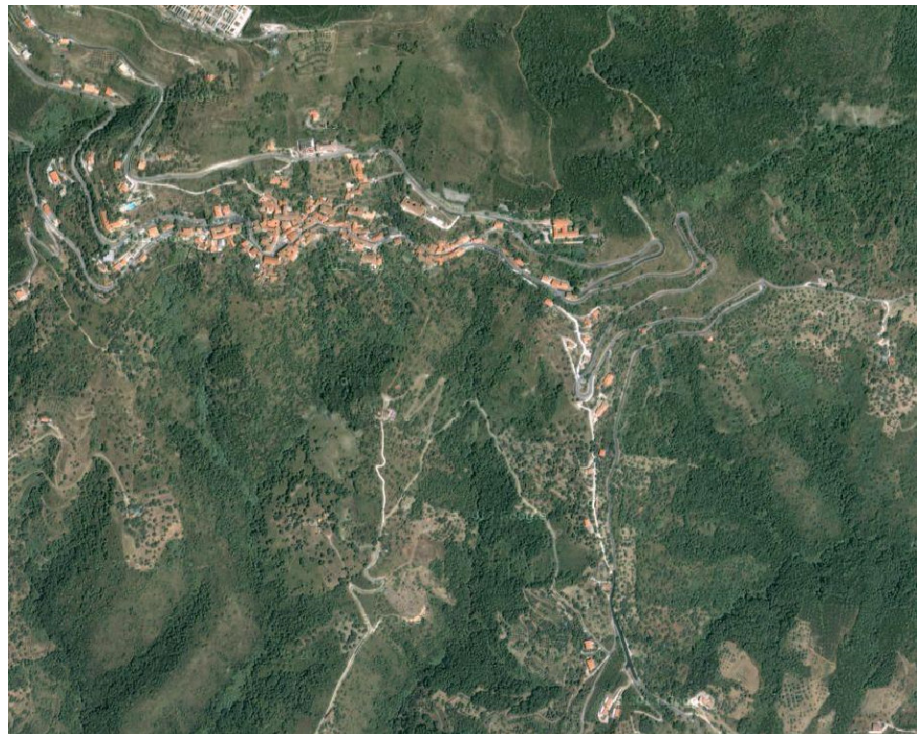
ing. Marco Donnarumma
ing. Vincenzo Pacella

SUPPORTO AL RUP

Arch. Consuelo De Pascale
Geom. Domenico Montalbetti
Sig. Guido Di Filippo

SERVIZIO GEOLOGICO

dott. Sergio Santoro
ing. Giuseppe Scalese



Data:

GENNAIO 2019

Emissione rev. 2

Oggetto

Revisione

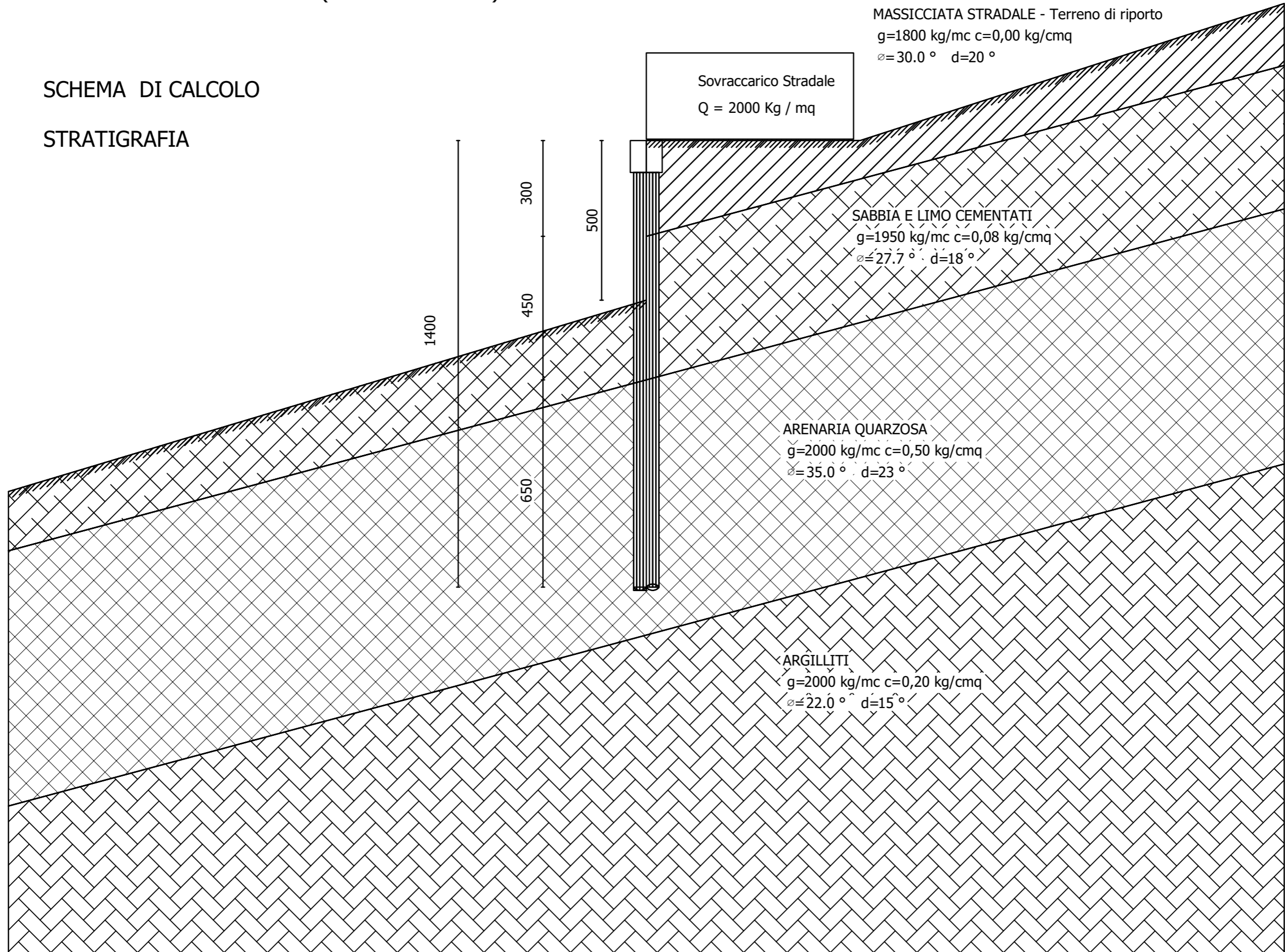
**R.U.P.
Ing. Paolo Cupo**

**Il Dirigente
Dott. Domenico Ranesi**

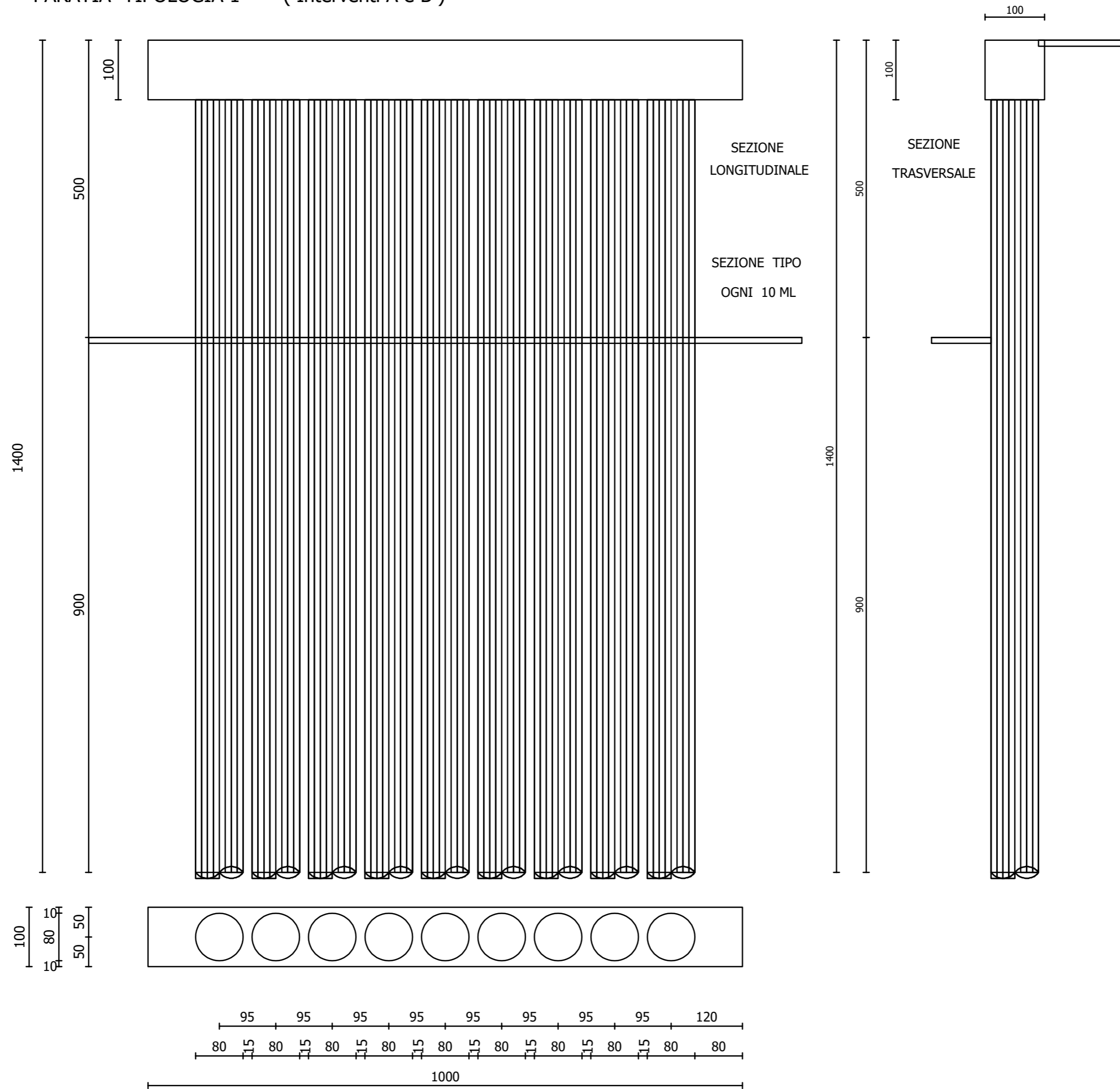
PARATIA TIPOLOGIA 1 (Interventi A e B)

SCHEMA DI CALCOLO

STRATIGRAFIA



PARATIA TIPOLOGIA 1 (Interventi A e B)

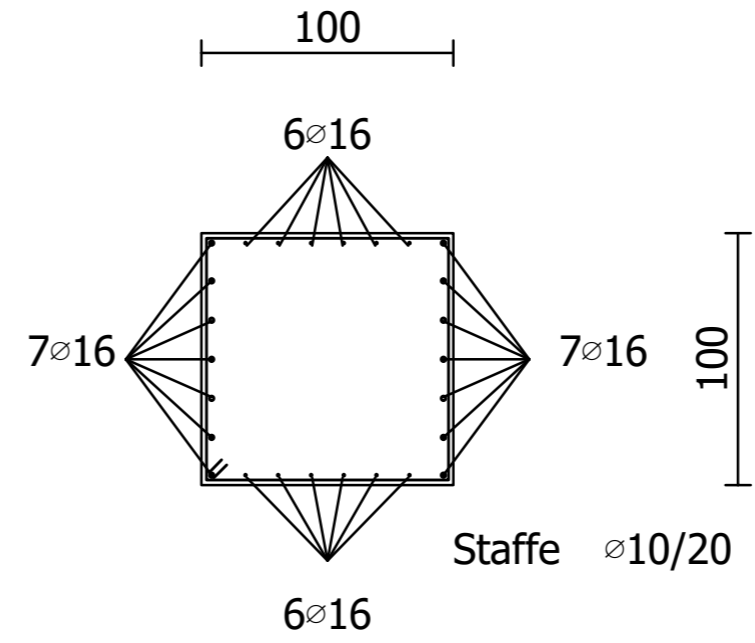
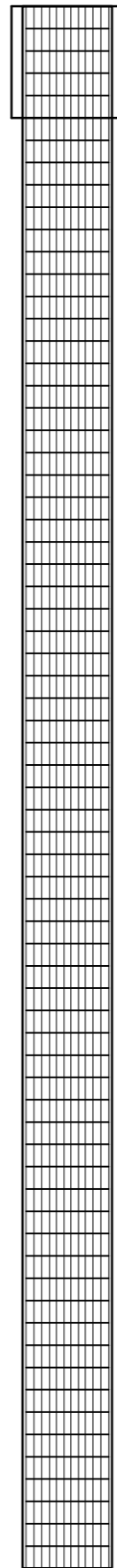


DISTINTA ARMATURA

22 \varnothing 20
L = 4 ml

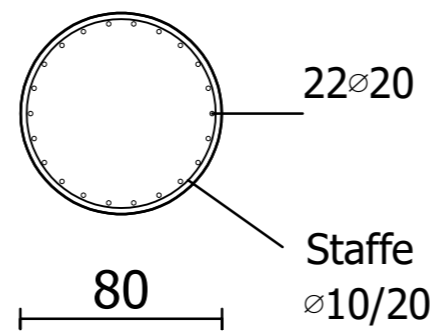
22 \varnothing 20
L = 12 ml

1400



Cordolo N. 1(Quota 0,00)

SEZIONE PALO



PARATIA TIPOLOGIA 2 (Intervento C)

SCHEMA DI CALCOLO

STRATIGRAFIA

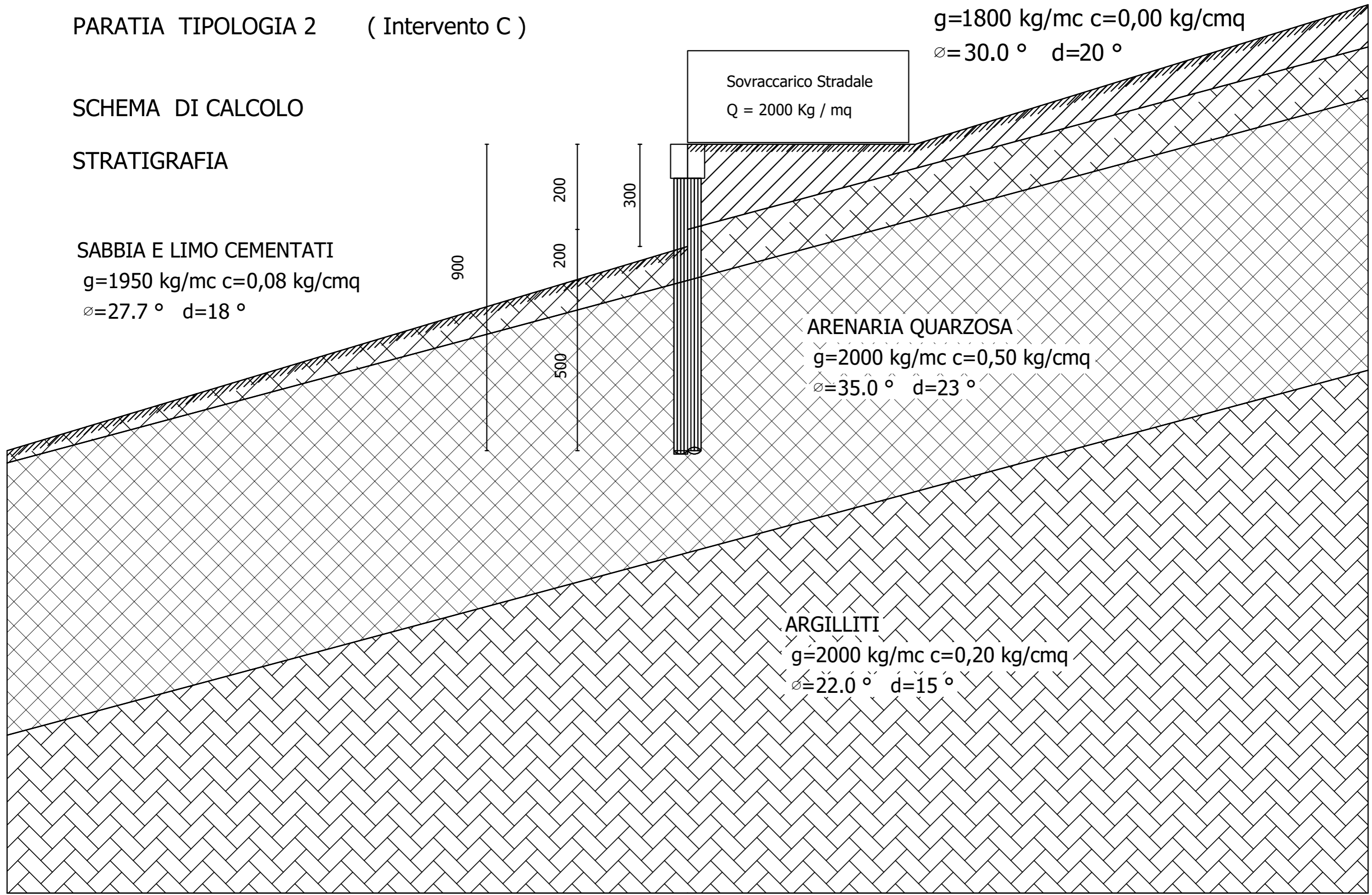
SABBIA E LIMO CEMENTATI
 $g=1950 \text{ kg/mc}$ $c=0,08 \text{ kg/cm}^2$
 $\phi=27.7^\circ$ $d=18^\circ$

MASSICCATA STRADALE - Terreno di riporto
 $g=1800 \text{ kg/mc}$ $c=0,00 \text{ kg/cm}^2$
 $\phi=30.0^\circ$ $d=20^\circ$

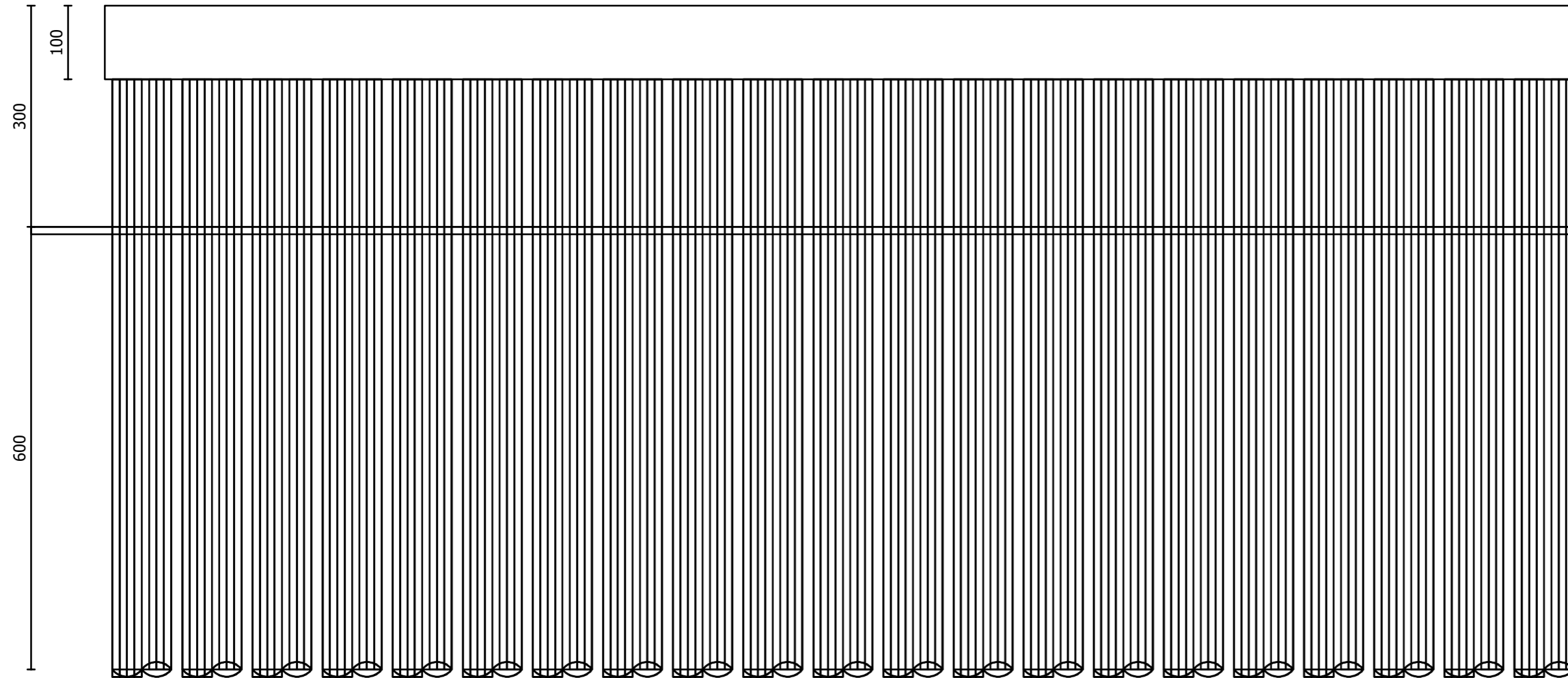
Sovraccarico Stradale
 $Q = 2000 \text{ Kg / m}^2$

ARENARIA QUARZOSA
 $g=2000 \text{ kg/mc}$ $c=0,50 \text{ kg/cm}^2$
 $\phi=35.0^\circ$ $d=23^\circ$

ARGILLITI
 $g=2000 \text{ kg/mc}$ $c=0,20 \text{ kg/cm}^2$
 $\phi=22.0^\circ$ $d=15^\circ$

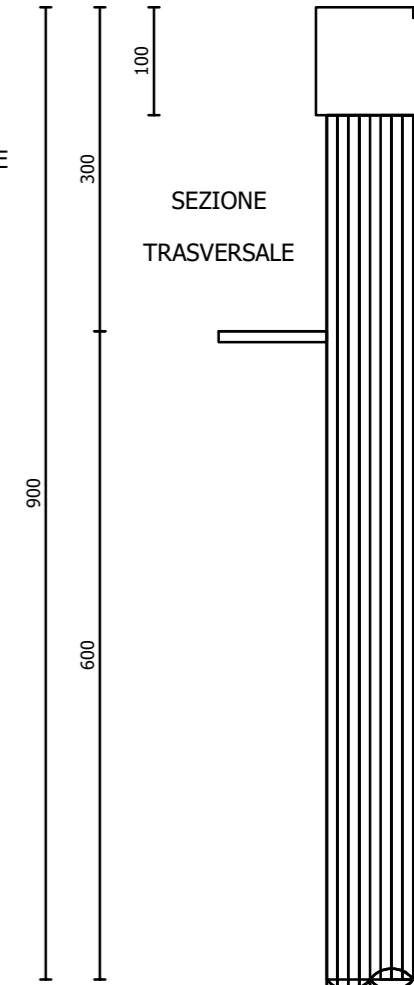


PARATIA TIPOLOGIA 2 (Intervento C)

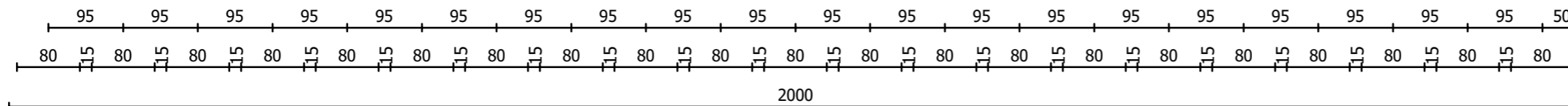
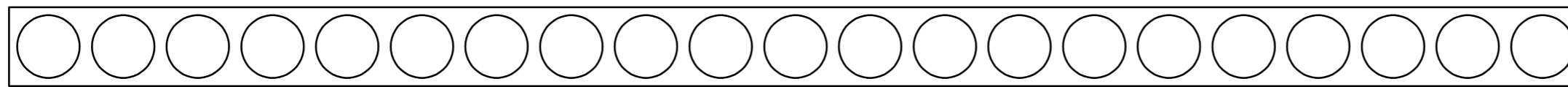
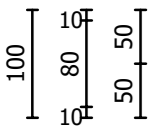


SEZIONE
LONGITUDINALE

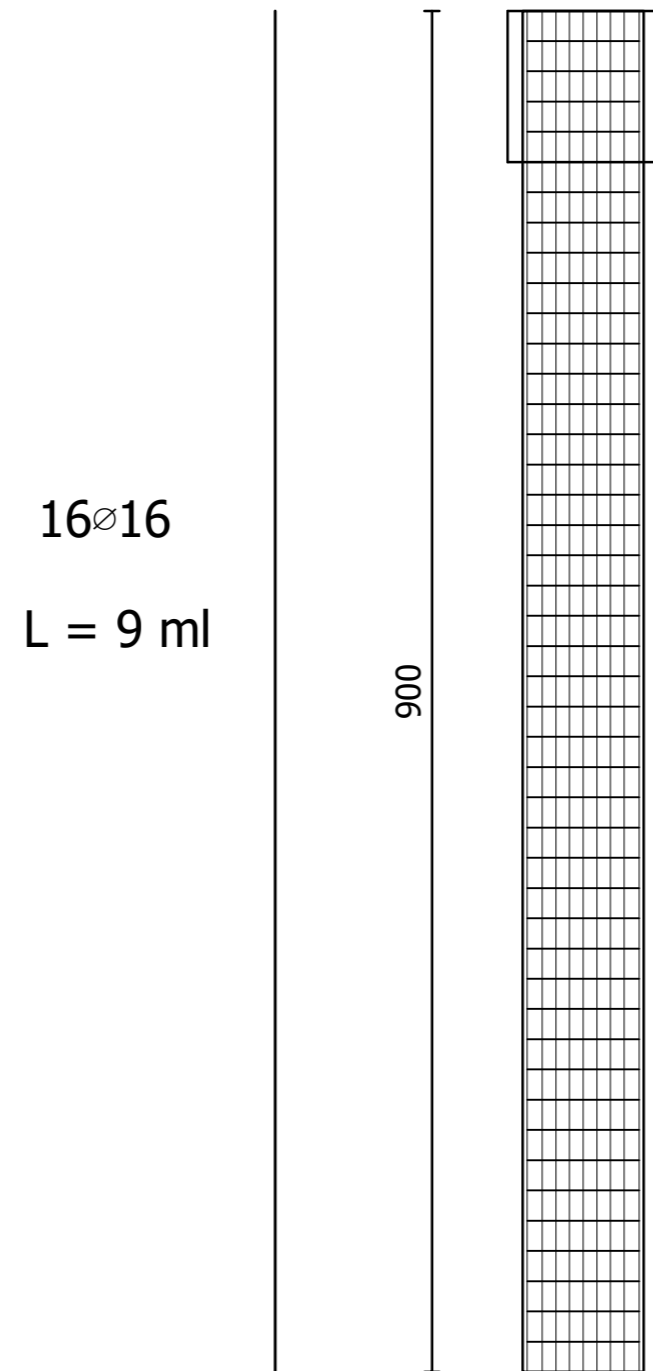
SEZIONE TIPO
OGNI 20 ML



SEZIONE
TRASVERSALE



DISTINTA ARMATURA



Cordolo N. 1(Quota 0,00)

